



Socrates

COMENIUS



I.S.I.S.S. “D. SARTOR”
Castelfranco V.to (TV)
Sez. Associata di
Montebelluna (TV)

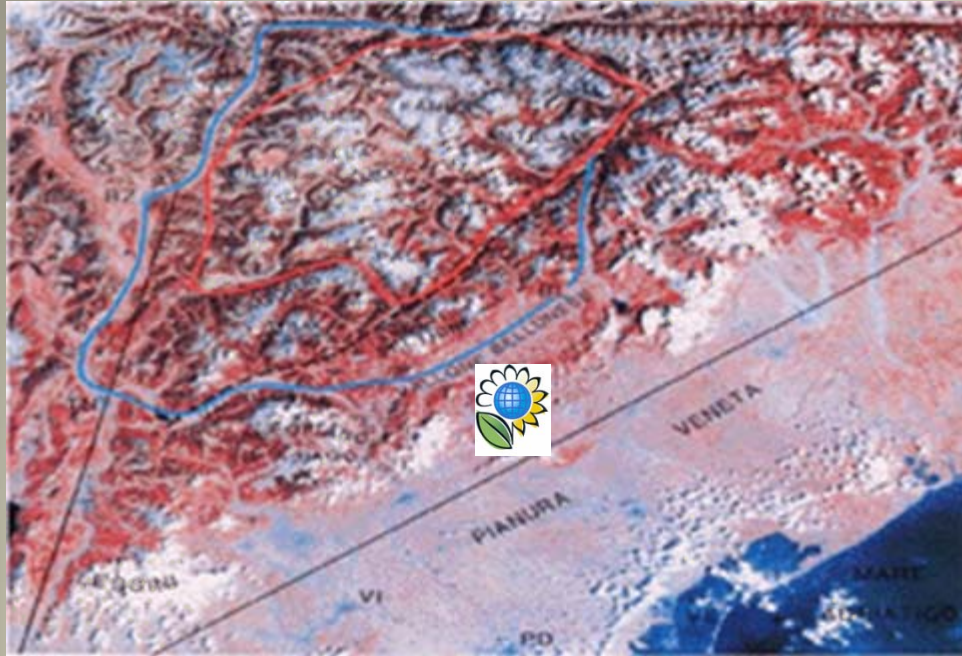


Dolomities

- Celebrated all over the world for their the pink faces and pink spikes.



In North east
of Italy



- They are part of The eastern Alps and have and extend to 8000 Km².



The mountain
form groups
or bastions
from colossal
groups of
cliffs



The pink colour of the
mountains is due to the
compositions of the rocks
(Dolomia and calcari)

The landscape has wide and deep valleys divided by the bare and composing rocky faces



Distinctive are the colossal faces

The jagged outline is shaped by wash erosion and intense cold



The Dolomiti Bellunesi are the mountains closest to the large towns in the venetian plain but they are not very well known to the mass tourism



Parco Nazionale Dolomiti Bellunesi

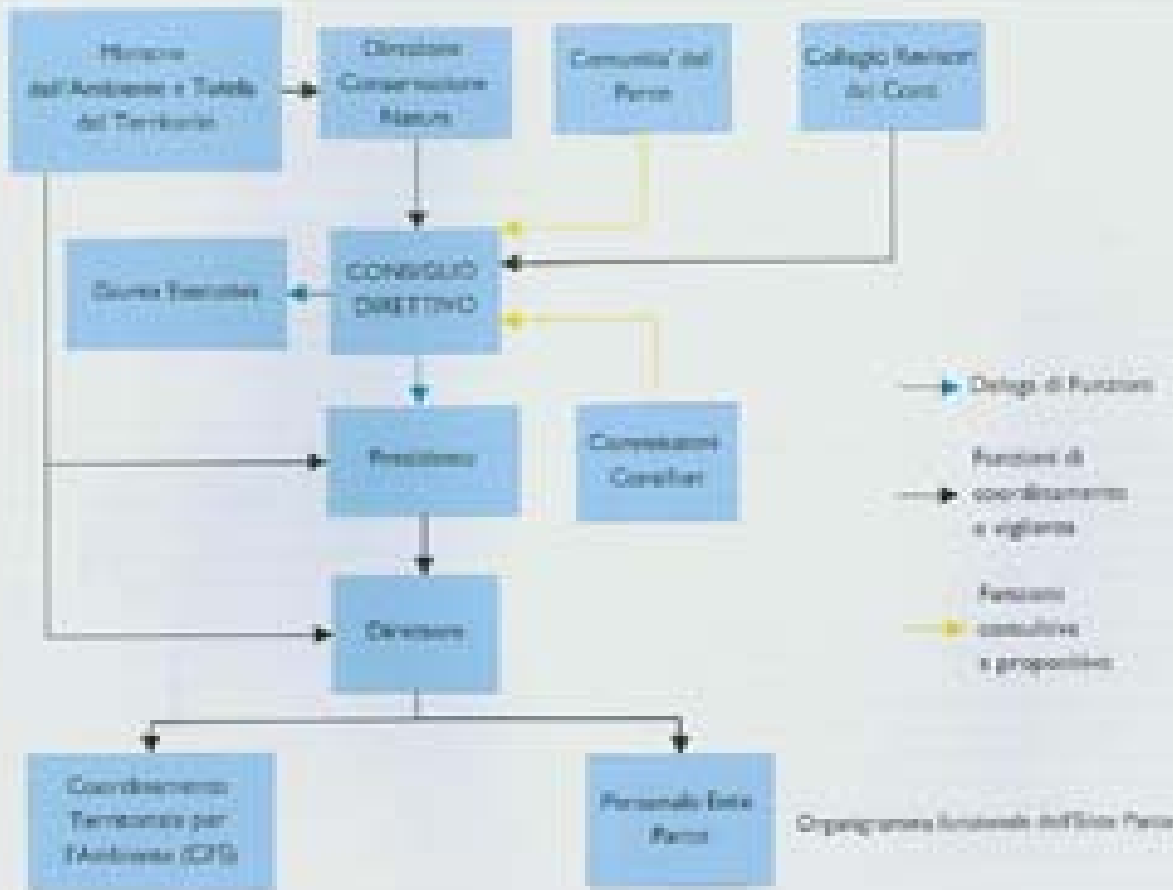




Parco Nazionale Dolomiti Bellunesi



The widest "wilderness" area
in the Nord east of
Italy, with less than 100
kilometres from Venice; it
has an extension of
32.000 Ha



The History of the park

It is of recent date

- **1960 In the sixties: earliest proposal of institution of a park**
- **1970 In the seventies creation of a park**
- **DPR 12.7.1993: institution of the parkistituzione Ente Parco**
- **1999: establishment of permanent staffassunzione**
- **2001: Publication of policy (operations plans)**



Great variety of flora and fauna

Excellent preservation of the ecosystems

Important the ancient anthropic (human) life Area



Fauna:

The Mammals

The richness of environments and the age of the woods permit life for all the kind of Alpine wildlife

The Ungulates are the reppresentative species in the park



Roe

**More than 2000
Chamoises in the
park**



Fox



Snow grouse

- Birdlife Avifauna.
- 116 species of bird nests in the park specie (45% of all Italy)



Great number of diurnal and...

Golden
eagle



...night birds



In the park have
their natural
habitat the
tetraones



- The role of the park is absolutely natural heritage of the wildlife in the region



- The setting up of the park does not entail any kind of expropriation of land
- A part from the entirely natural reserves area in the Park one can farm and use the woods.
- In the Park the inhabitant can pick mushrooms and cut woods for famiuly needs.
- Huts can be renovated, they are not untouchable, and indeed the Park has already renovated many of them at its own expense.



The park manages the territory

- Scientific research
- Tourism and cultural facilities
- Alpine refuges
- A Great number of path ways
- Farm activities support
- Technological innovation
- Monetary investments from european funds for the area Ricerca scientifica





Slow food

The end

