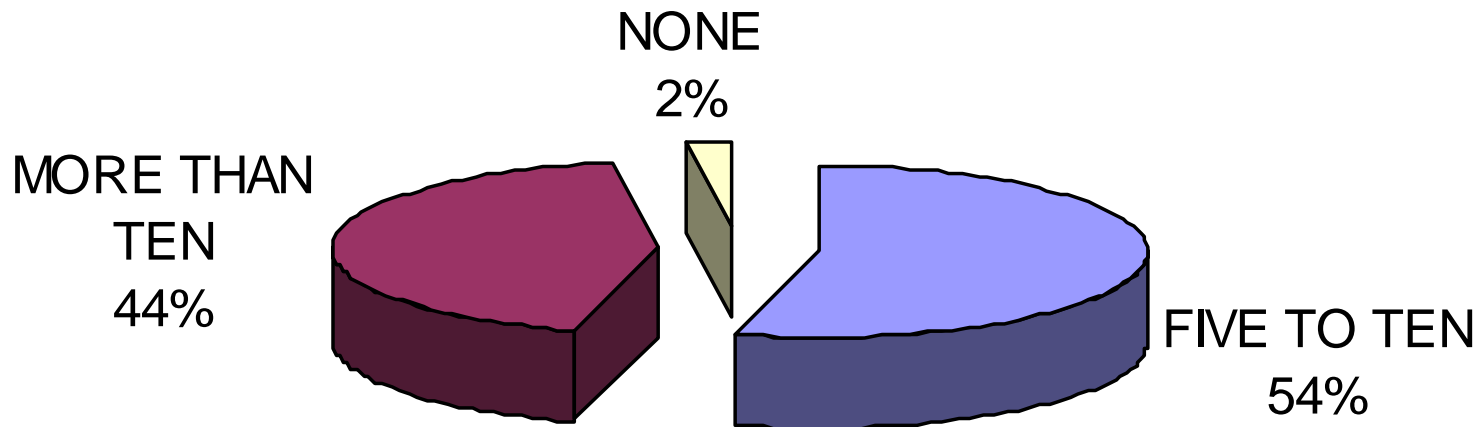
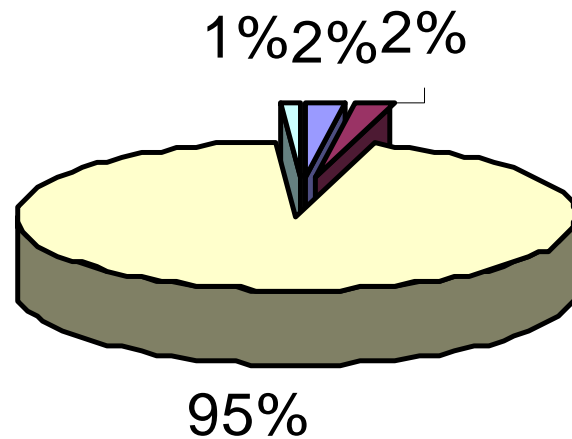


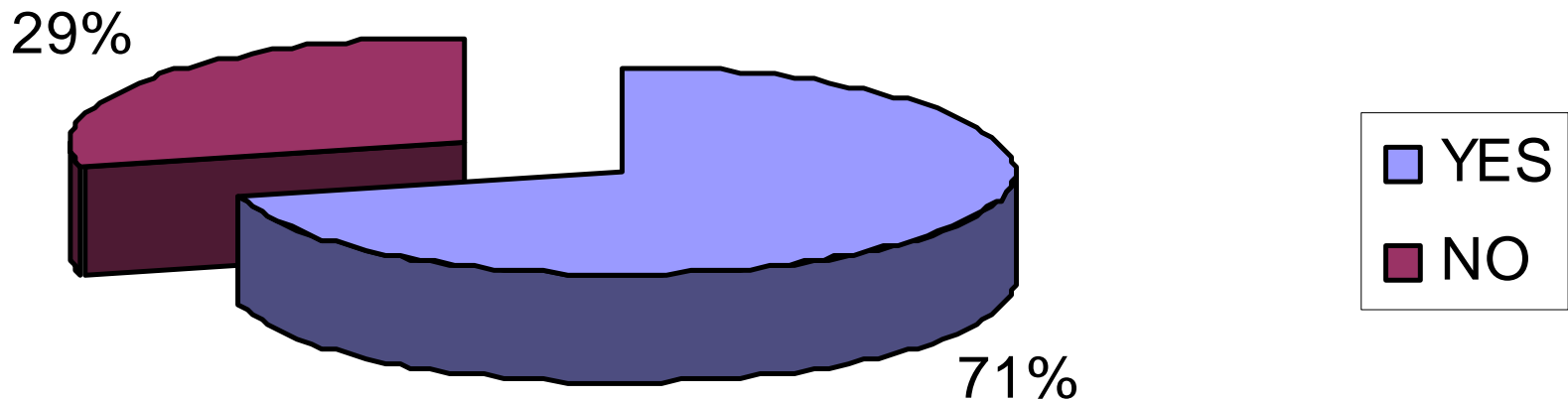
**HOW MANY NATIONAL PARKS ARE THERE IN GREECE?
(THE CORRECT ANSWER IS "TEN")**



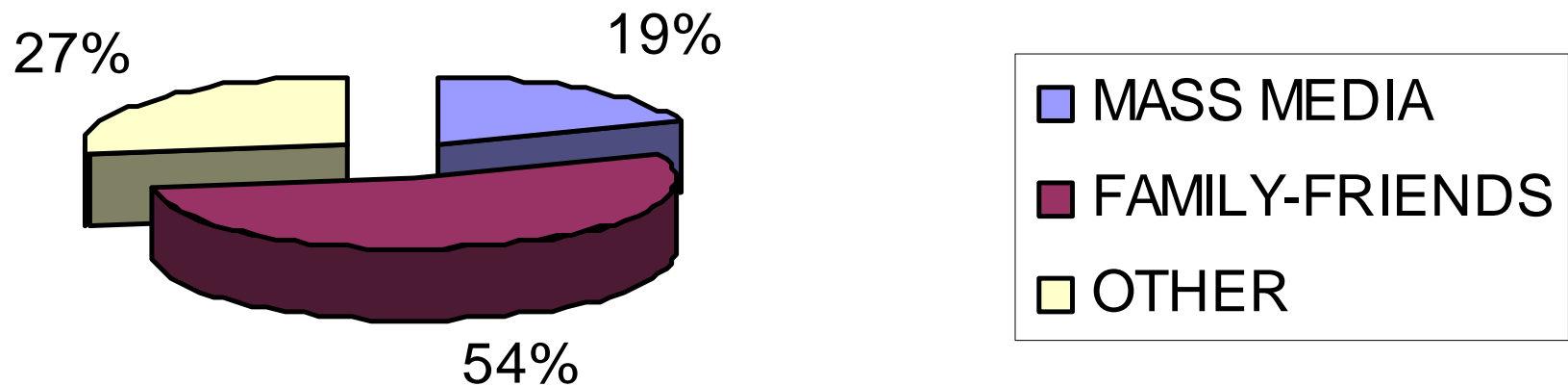
**WHICH IS THE NEAREST NATIONAL
PARK CLOSE TO THESSALONIKI?
(THE CORRECT ANSWER IS
"OLYMPUS")**



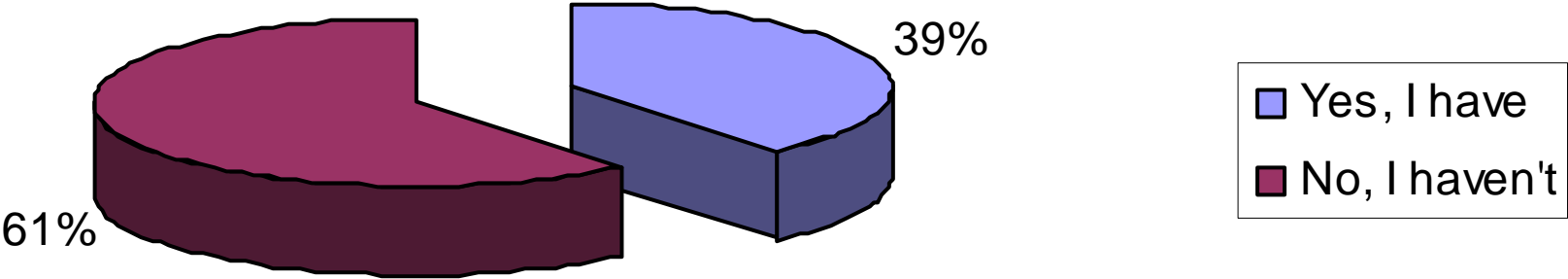
DO YOU KNOW THE NATIONAL PARK OF OLYMPUS?



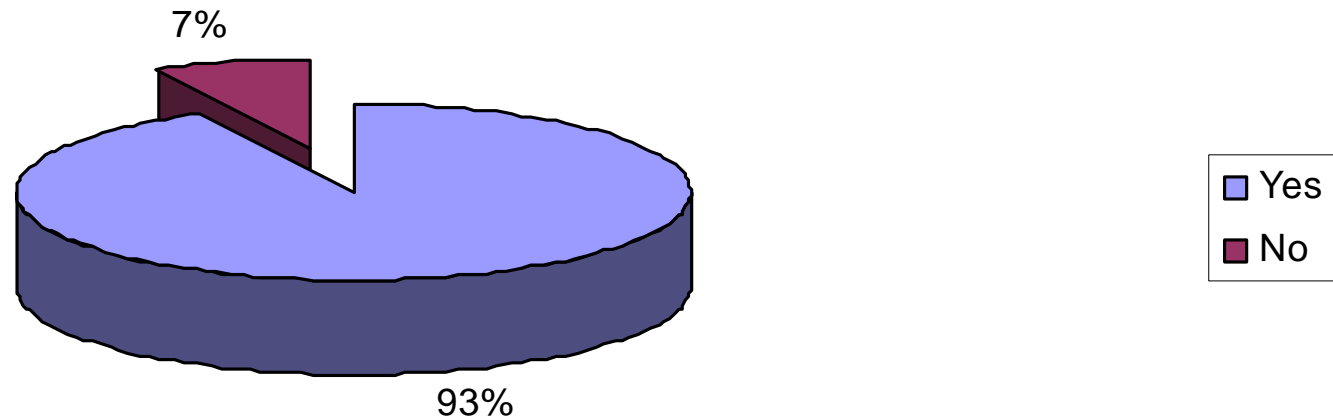
FROM WHERE DID YOU LEARN ABOUT THE NATIONAL PARK OF OLYMPUS?



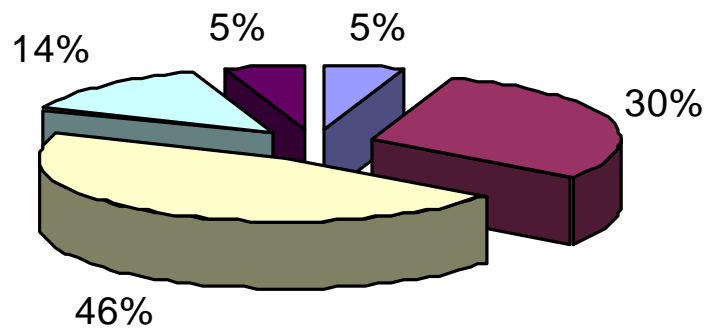
Have you ever been to the National Park of Olympus?



Would you like to visit the National Park?

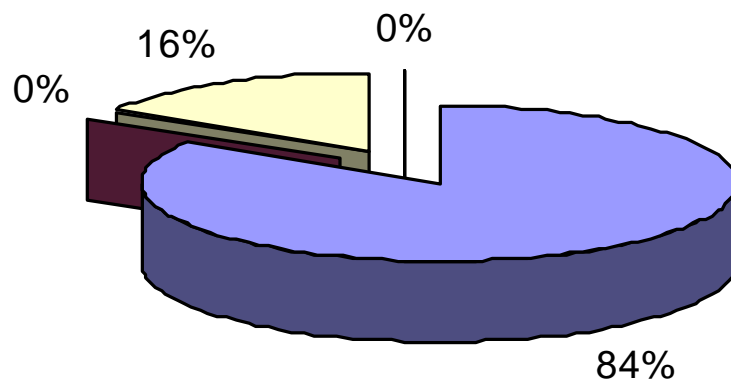


What would you stimulate to visit the national park?



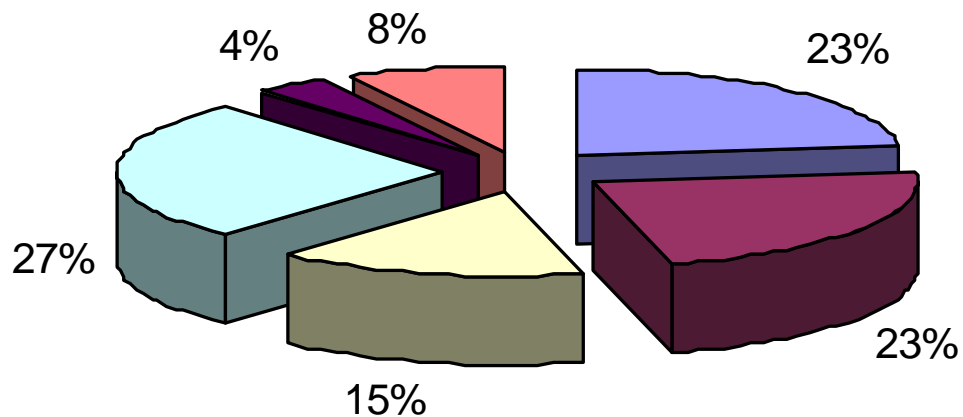
- private, detailed guided tours through nature
- adventure trails for the whole family
- a relaxed walk through nature
- a lot of actions for children
- others

What did you especially like there?



- The untouched nature?
- The kind staff
- The good organisation
- Other

What could be improved in the national park?



- A wide of offers for children, seniors, groups etc.
- Possibilities to go there by public transport
- Better labeling of trails
- More detailed information on the way
- Other
- Nothing